



Pantronics

PANTRONICS CO.,LTD.
suwichak@pantronics.co.th
Line ID.pantronics

Vertiv™ Liebert® GXE UPS

1000 - 3000 VA 230V

Essential and Affordable
UPS for High Performance
Power Protection



Essential and affordable Uninterruptible Power Supply (UPS) for high performance protection

The Vertiv™ Liebert® GXE UPS is an online double conversion solution which offers power protection in an affordable, efficient system with deployment and operation flexibility.

The high output power factor (0.9) of the Liebert GXE single-phase UPS enables continuous and reliable power to more connected devices, protecting them against many disturbances in the AC mains with the online double conversion technology and the input surge protection.

The high efficiency in both line and ECO modes of operation for this already affordable UPS also drives energy and operational costs savings.

Available in 1, 1.5, 2 and 3kVA power ratings in either a compact tower form factor, or in a rack/tower form factor with flexibility for mounting in either tower position or inside a rack cabinet together with the IT equipment critical for any application. Moreover, the capability to add external battery cabinets in the rack/tower models provides scalable runtime for those applications requiring even a longer period of backup in case of AC mains failures. It is combined with a powerful internal charger with a maximum of 6 Amps for a fast recharge.

In addition to the extended runtime, having multiple monitoring options make this compact UPS ideal for delivering best-in-class power protection to equipment at the edge of networks or in remote sites.

Vertiv™ Liebert® GXE Features

- High output power factor (0.9)
- High efficiency in online mode (up to 91%)
- Even higher efficiency (up to 96%) in ECO mode
- Compact tower only form factor or flexible rack/tower convertible design
- User-friendly LCD interface
- Fast recharge time (<4 hours to 90% for internal batteries)
- Extended runtime with up to 4 optional External Battery Cabinets (EBC)
- Hot-swappable user replaceable internal UPS batteries
- Remote management capability with optional Vertiv™ Liebert® Intellislot™ IS-UNITY network management cards
- (8) IEC60320 C13 outlets (all models), plus (1) C19 (3kVA model)
- Automatic internal bypass
- Free UPS management software

What's in the box?

- Liebert® GXE UPS
- Quick Installation Guide
- Safety Instructions
- Adjustable 4-post rack mounting kit (rack/tower models only)
- Rack mounting ears & hardware
- Input power cables (UK, AUS, Schuko. 1.8 m)
- Output power cables IEC C13-C14 (x2 in 2-3kVA models, and x1 in 1-1.5kVA models)
- USB cable type A-B (1.2 m)
- Stabilizing feet for tower configuration (rack/tower models only)
- Free [Vertiv™ Power Assist](#) software for local UPS status and shutdown, or [Vertiv™ Power Insight™](#) for remote network management



Vertiv™ Liebert® GXE 1000 VA rack/tower shown with an optional 2U external battery cabinet

Vertiv™ Liebert® GXE Features and Benefits

PF 0.9 **High output power factor (0.9)**
More usable power enables more connected loads saving space and costs.

Efficiency (up to 91%) in online mode
Higher efficiency means an optimized energy management and lower heat dissipation, thus providing energy savings and improved reliability.

Remote monitoring
Liebert® IntelliSlot™ for operation with optional IS-UNITY cards.

Hot-swappable user replaceable batteries
Easy replacement of the internal batteries without power interruption.

Multiple power sockets
x8 IEC C13 output sockets in all the ratings to protect more devices.

Flexible Rack / Tower models
Space-saving UPS provides rack space optimization and flexible installation.

External battery cabinets
Up to 4 external battery cabinets can be connected in rack/tower models for applications requiring extended runtime.

Fast recharge time
Powerful integrated charger, recharging internal batteries in less than 4 hours @90%. Up to 6 Amps maximum capacity with EBCs connected in R/T models.

LCD **LCD display**
It provides insight to UPS status for easy installation and operation.

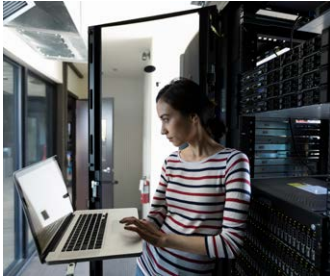
Compact tower design
Tower form factor with a compact design for non-rack applications.



Rack mounting kit included
4-post rack mounting kit included in rack/tower models for easy and immediate installation.



Vertiv™ Liebert® GXE Applications



IT

- Servers
- Networking equipment
- Data storage



Finance

- Branch offices
- Closed-circuit televisions and data protection
- ATMs



Telecom

- 5G mobile stations
- Access and “last mile”
- Small control rooms



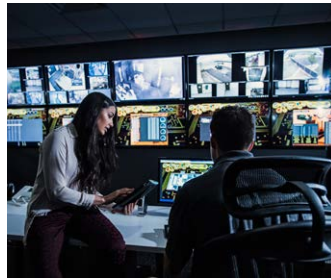
Industrial

- Manufacturing sites
- Control equipment and programmable logic controllers (PLCs)
- Data and networking equipment



Education

- Networking closets
- Networking equipment
- Office protection



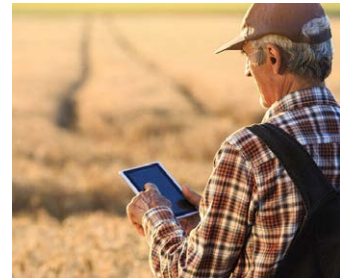
Government

- Distributed offices
- Closed-circuit television (CCTV) and data protection
- Small server and storage rooms



Retail

- Several point of sale systems
- Networking and wiring closets
- Security and voice over internet protocol (VoIP) telephony



Edge

- Distributed cloud services
- Content providers
- Sensors and data stations

To get the utmost performance, upgrade to Vertiv™ Liebert® GXT5

Liebert® GXT5 750VA - 3000VA extra features

Unity output power factor (1.0)	3 years standard warranty
Controllable output power sockets	Up to 10 external battery cabinets
Even higher efficiency in online mode (up to 94%)	Autodetection of external battery cabinets
Improved graphical LCD display	Improved battery charger
Lithium-ion battery models available	Frequency converter mode



Technical Specifications - Vertiv™ Liebert® GXE 1-3 kVA Tower

Model Number	GXE3-1000IMT	GXE3-1500IMT	GXE3-2000IMT	GXE3-3000IMT
Power Rating (VA/W)	1000VA / 900W	1500VA / 1350W	2000VA / 1800W	3000VA / 2700W
Form Factor	Tower	Tower	Tower	Tower
Dimensions, mm				
Unit (W x D x H)	160 x 315 x 245	160 x 420 x 245	160 x 420 x 245	200 x 425 x 345
Shipping (W x D x H)	235 x 395 x 325	235 x 560 x 325	235 x 560 x 325	320 x 560 x 460
Weight, kg				
Unit	11.8	16.4	19.4	27.7
Shipping	12.5	17.3	20.4	29.3
Input AC Parameters				
Voltage Range Without Battery Operation (230V default, derating applies)•	110 - 290	110 - 290	110 - 290	110 - 290
Voltage Range Without Battery Operation (230V default, 100% load)	180 - 290	180 - 290	180 - 290	180 - 290
Frequency Range (Hz, autosensing)	40 - 70	40 - 70	40 - 70	40 - 70
Input Power Connector	IEC60320 C14	IEC60320 C14	IEC60320 C20	IEC60320 C20
Surge Protection (J)	600	600	600	600
Output AC Parameters				
Output Voltage	220/230 (default) /240	220/230 (default) /240	220/230 (default) /240	220/230 (default) /240
Waveform	Pure Sine Wave	Pure Sine Wave	Pure Sine Wave	Pure Sine Wave
Output Overload (AC Mode)	105% - 110% @ 10 min 111% - 130% @ 30 sec 131 - 150% @ 2 sec > 150% @ immediate	105% - 110% @ 10 min 111% - 130% @ 30 sec 131 - 150% @ 2 sec > 150% @ immediate	105% - 110% @ 10 min 111% - 130% @ 30 sec 131 - 150% @ 2 sec > 150% @ immediate	105% - 110% @ 10 min 111% - 130% @ 30 sec 131 - 150% @ 2 sec > 150% @ immediate
Output Receptacles	8 x IEC60320 C13	8 x IEC60320 C13	8 x IEC60320 C13	8 x IEC60320 C13 1 x IEC60230 C19
Efficiency (online mode, max.)	89%	89%	89%	91%
Efficiency (ECO mode, max.)	95%	95%	96%	96%
Battery				
Type	Valve-regulated, non-spillable, lead-acid	Valve-regulated, non-spillable, lead-acid	Valve-regulated, non-spillable, lead-acid	Valve-regulated, non-spillable, lead-acid
Recharge Time (internal batteries, typical)	<4 hr @ 90%	<4 hr @ 90%	<4 hr @ 90%	<4 hr @ 90%
Backup Time (100% load, minutes)	3.1	3.2	3.2	3.3
Backup Time (50% load, minutes)	9	9	9	9.5
Compatible with External Battery Cabinets	No	No	No	No
Environmental				
Operating Temperature (°C)	0 to 40°C	0 to 40°C	0 to 40°C	0 to 40°C
Storage Temperature (°C, without battery inside)	-20°C to +50°C	-20°C to +50°C	-20°C to +50°C	-20°C to +50°C
Relative Humidity (operation, non-condensing)	5% to 95%	5% to 95%	5% to 95%	5% to 95%
Operating Altitude (m), without derating (**)	2000	2000	2000	2000
Audible Noise (line mode)	<53dBA	<53dBA	<53dBA	<53dBA
Agency				
Compliance	CE, CB Report, UKCA, Morocco, RCM	CE, CB Report, UKCA, Morocco, RCM	CE, CB Report, UKCA, Morocco, RCM	CE, CB Report, UKCA, Morocco, RCM
Safety	IEC/EN 62040-1	IEC/EN 62040-1	IEC/EN 62040-1	IEC/EN 62040-1
Surge Immunity	EN 61000-4-5	EN 61000-4-5	EN 61000-4-5	EN 61000-4-5
Transportation	ISTA 2A	ISTA 2A	ISTA 2A	ISTA 2A
Environmental	RoHS, REACH, WEEE	RoHS, REACH, WEEE	RoHS, REACH, WEEE	RoHS, REACH, WEEE
Communications and Management				
Slot for optional cards	Yes	Yes	Yes	Yes
Communication port	USB	USB	USB	USB
Emergency Power Off (EPO)	Yes	Yes	Yes	Yes
Warranty				
Warranty (electronics and batteries)	2 years	2 years	2 years	2 years

(*) Note. Specific conditions or power derating applies

(**) Note: up to 3000 m with power derating

Technical Specifications - Vertiv™ Liebert® GXE 1-3 kVA Rack/Tower

Model Number	GXE3-1000IRT2UXL	GXE3-1500IRT2UXL	GXE3-2000IRT2UXL	GXE3-3000IRT2UXL
Power Rating (VA/W)	1000VA / 900W	1500VA / 1350W	2000VA / 1800W	3000VA / 2700W
Form Factor	Rack / Tower (2U)	Rack / Tower (2U)	Rack / Tower (2U)	Rack / Tower (2U)
Dimensions, mm				
Unit (W x D x H)	438 x 430 x 86	438 x 430 x 86	438 x 430 x 86	438 x 630 x 86
Shipping (W x D x H)	560 x 600 x 235	560 x 600 x 235	560 x 600 x 235	790 x 600 x 235
Weight, kg				
Unit	16.0	19.6	22.7	31.5
Shipping	17.6	21.6	24.8	34.2
Input AC Parameters				
Voltage Range Without Battery Operation (230V default, derating applies)*	110 - 290	110 - 290	110 - 290	110 - 290
Voltage Range Without Battery Operation (230V default, 100% load)	180 - 290	180 - 290	180 - 290	180 - 290
Frequency Range (Hz, autosensing)	40 - 70	40 - 70	40 - 70	40 - 70
Input Power Connector	IEC60320 C14	IEC60320 C14	IEC60320 C20	IEC60320 C20
Surge Protection (J)	600	600	600	600
Output AC Parameters				
Output Voltage	220/230 (default) /240	220/230 (default) /240	220/230 (default) /240	220/230 (default) /240
Waveform	Pure Sine Wave	Pure Sine Wave	Pure Sine Wave	Pure Sine Wave
Output Overload (AC Mode)	105% - 110% @ 10 min 111% - 130% @ 30 sec 131 - 150% @ 2 sec > 150% @ immediate	105% - 110% @ 10 min 111% - 130% @ 30 sec 131 - 150% @ 2 sec > 150% @ immediate	105% - 110% @ 10 min 111% - 130% @ 30 sec 131 - 150% @ 2 sec > 150% @ immediate	105% - 110% @ 10 min 111% - 130% @ 30 sec 131 - 150% @ 2 sec > 150% @ immediate
Output Receptacles	8 x IEC60320 C13	8 x IEC60320 C13	8 x IEC60320 C13	8 x IEC60320 C13 1 x IEC60230 C19
Efficiency (online mode, max.)	89%	89%	89%	91%
Efficiency (ECO mode, max.)	95%	95%	96%	96%
Battery				
Type	Valve-regulated, non-spillable, lead-acid	Valve-regulated, non-spillable, lead-acid	Valve-regulated, non-spillable, lead-acid	Valve-regulated, non-spillable, lead-acid
Recharge Time (internal batteries, typical)	<4 hr @ 90%	<4 hr @ 90%	<4 hr @ 90%	<4 hr @ 90%
Backup Time (100% load, minutes)	3.1	3.2	3.2	3.3
Backup Time (50% load, minutes)	9	9	9	9.5
Compatible External Battery Cabinet	GXE3-EBC24VRT2U	GXE3-EBC36VRT2U	GXE3-EBC48VRT2U	GXE3-EBC72VRT2U
Environmental				
Operating Temperature (°C)	0 to 40°C	0 to 40°C	0 to 40°C	0 to 40°C
Storage Temperature (°C, without battery inside)	-20°C to +50°C	-20°C to +50°C	-20°C to +50°C	-20°C to +50°C
Relative Humidity (operation, non-condensing)	5% to 95%	5% to 95%	5% to 95%	5% to 95%
Operating Altitude (m), without derating (**)	2000	2000	2000	2000
Audible Noise (line mode)	<53dBA	<53dBA	<53dBA	<53dBA
Agency				
Compliance	CE, CB Report, UKCA, Morocco, RCM	CE, CB Report, UKCA, Morocco, RCM	CE, CB Report, UKCA, Morocco, RCM	CE, CB Report, UKCA, Morocco, RCM
Safety	IEC/EN 62040-1	IEC/EN 62040-1	IEC/EN 62040-1	IEC/EN 62040-1
Surge Immunity	EN 61000-4-5	EN 61000-4-5	EN 61000-4-5	EN 61000-4-5
Transportation	ISTA 2A	ISTA 2A	ISTA 2A	ISTA 2A
Environmental	RoHS, REACH, WEEE	RoHS, REACH, WEEE	RoHS, REACH, WEEE	RoHS, REACH, WEEE
Communications and Management				
Slot for optional cards	Yes	Yes	Yes	Yes
Communication port	USB	USB	USB	USB
Emergency Power Off (EPO)	Yes	Yes	Yes	Yes
Warranty				
Warranty (electronics and batteries)	2 years	2 years	2 years	2 years

(*) Note. Specific conditions or power derating applies. (**) Note: up to 3000 m with power derating.

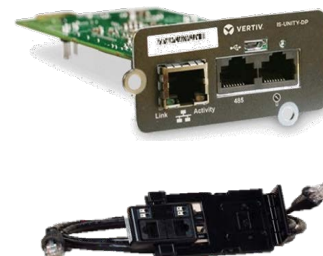
External Battery Cabinets

Model Number	GXE3-EBC24VRT2U	GXE3-EBC36VRT2U	GXE3-EBC48VRT2U	GXE3-EBC72VRT2U
Dimensions, mm				
Unit (W x D x H)	438 x 410 x 86	438 x 410 x 86	438 x 510 x 86	438 x 630 x 86
Shipping (W x D x H)	560 x 600 x 235	560 x 600 x 235	650 x 600 x 235	600 x 790 x 235
Weight, kg				
Unit	16.2	21.2	28.6	40.8
Shipping	21.1	26.1	34.1	47.2
Agency				
Compliance	CE, EAC, UKCA, Morocco	CE, EAC, UKCA, Morocco	CE, EAC, UKCA, Morocco	CE, EAC, UKCA, Morocco

Accessories

Network Communication Cards and Environmental Sensors

Model Number	Description
IS-UNITY-SNMP	10/100 Mbit Ethernet SNMP, Device Web Page, with MIB and configuration cable
IS-UNITY-DP (03020728)	Same as IS-UNITY-SNMP, and BACnet IP and MODBUS (TCP & RTU)
IS-RELAY	IS-RELAY Card
SN-T	Modular with single temperature sensor
SN-TH	Modular with single temperature and humidity sensor



External Battery Cabinets

UPS Model	External Battery Cabinet
GXE3-1000IRT2UXL	GXE3-EBC24VRT2U
GXE3-1500IRT2UXL	GXE3-EBC36VRT2U
GXE3-2000IRT2UXL	GXE3-EBC48VRT2U
GXE3-3000IRT2UXL	GXE3-EBC72VRT2U



Internal Replacement Battery Kits

UPS Model	Replacement Battery Kit
GXE3-1000IRT2UXL	GXTRT-24BATKIT
GXE3-1500IRT2UXL	GXTRT-36BATKIT
GXE3-2000IRT2UXL	GXTRT-48BATKIT
GXE3-3000IRT2UXL	GXTRT-72BATKIT
GXE3-1000IMT	GXTRT-24BATKIT
GXE3-1500IMT	GXTRT-36BATKIT
GXE3-2000IMT	GXTRT-48BATKIT
GXE3-3000IMT	VUPS-72VBATKIT9AMT



Vertiv™ Liebert® MicroPOD – Maintenance Bypass and Output Distribution

The Vertiv™ Liebert® MicroPOD (Power Output Distribution) is a maintenance bypass option for UPS products, 3kVA and below. It allows removal of the UPS without powering down the connected equipment.

UPS Model	MicroPOD Model	Input socket	Output receptacles
GXE3-1000IRT2UXL	MP2-210K	IEC60320 C14	8 x IEC60320 C13
GXE3-1500IRT2UXL		IEC60320 C14	
GXE3-2000IRT2UXL	MP2-220K	IEC60320 C20	6 x IEC60320 C13 & 1 x IEC60320 C19
GXE3-3000IRT2UXL	PD5-20AC20	IEC60320 C20	



UPS Rear View

Vertiv™ Liebert® GXE tower models



- 1. AC input
- 2. Input circuit breaker
- 3. USB communication port
- 4. EPO port
- 5. Vertiv™ Liebert® IntelliSlot™ for optional network management card
- 6. Output receptacles
- 7. Grounding screw

Liebert® GXE3-3000IMT

Vertiv™ Liebert® GXE rack/tower mode



Liebert® GXE3-3000IRT2UXL

- 1. AC input
- 2. Input circuit breaker
- 3. USB communication port
- 4. EPO port
- 5. Vertiv™ Liebert® IntelliSlot™ for optional network management card
- 6. Output receptacles
- 7. Grounding screw
- 8. External battery cabinet connector

UPS Rear View

Runtime tool available at:

<https://www.vertiv.com/en-emea/support/tools-applications/vertiv-ups-interactive-runtime-tools/>



Vertiv™ Liebert® Liebert GXE 1-3kVA Tower

% load	1000 VA			1500 VA			2000 VA			3000 VA		
	Runtime	Load (W)	Load (VA)	Runtime	Load (W)	Load (VA)	Runtime	Load (W)	Load (VA)	Runtime	Load (W)	Load (VA)
100%	3.1	900	1000	3.2	1350	1500	3.2	1800	2000	3.3	2700	3000
70%	6.5	630	700	6.2	945	1050	6.5	1260	1400	6.2	1890	2100
60%	7.8	540	600	7.6	810	900	7.5	1080	1200	7.4	1620	1800
50%	9.0	450	500	9.0	675	750	9.0	900	1000	9.5	1350	1500
20%	22.0	180	200	24.0	270	300	26.0	360	400	29.0	540	600



Vertiv™ Liebert® GXE 1-3kVA Rack / Tower

% load	1000 VA Internal batteries			UPS + 1 EBC		UPS + 2 EBCs		UPS + 3 EBCs		UPS + 4 EBCs	
	Runtime	Load (W)	Load (VA)	Runtime	Runtime	Runtime	Runtime	Runtime	Runtime		
100%	3.1	900	1000	18	35	54	72				
80%	4.2	720	800	26	48	74	99				
70%	6.5	630	700	30	57	85	115				
60%	7.8	540	600	35	65	93	137				
50%	9.0	450	500	38	70	103	139				
40%	12.5	360	400	46	96	138	196				
20%	22.0	180	200	92	176	238	349				

UPS Part number: GXE3-1000IRT2UXL
See notes below about runtime. Runtimes in minutes.

EBC Part number: GXE3-EBC24VRT2U

% load	1500 VA Internal batteries			UPS + 1 EBC		UPS + 2 EBCs		UPS + 3 EBCs		UPS + 4 EBCs	
	Runtime	Load (W)	Load (VA)	Runtime	Runtime	Runtime	Runtime	Runtime	Runtime		
100%	3.2	1350	1500	18	35	55	74				
80%	4.5	1080	1200	26	46	73	99				
70%	6.2	945	1050	30	56	85	116				
60%	7.6	810	900	36	66	94	138				
50%	9.0	675	750	39	72	106	143				
40%	13.0	540	600	47	98	140	199				
20%	24.0	270	300	97	179	242	351				

UPS Part number: GXE3-1500IRT2UXL
See notes below about runtime. Runtimes in minutes.

EBC Part number: GXE3-EBC36VRT2U

% load	2000 VA Internal batteries			UPS + 1 EBC		UPS + 2 EBCs		UPS + 3 EBCs		UPS + 4 EBCs	
	Runtime	Load (W)	Load (VA)	Runtime	Runtime	Runtime	Runtime	Runtime	Runtime		
100%	3.2	1800	2000	19	37	55	75				
80%	4.6	1440	1600	26	49	73	100				
70%	6.5	1260	1400	30	56	85	116				
60%	7.5	1080	1200	37	67	86	139				
50%	9.0	900	1000	39	73	111	151				
40%	13.8	720	800	46	99	141	201				
20%	26.0	360	400	99	182	246	359				

UPS Part number: GXE3-2000IRT2UXL
See notes below about runtime. Runtimes in minutes.

EBC Part number: GXE3-EBC48VRT2U

% load	3000 VA Internal batteries			UPS + 1 EBC		UPS + 2 EBCs		UPS + 3 EBCs		UPS + 4 EBCs	
	Runtime	Load (W)	Load (VA)	Runtime	Runtime	Runtime	Runtime	Runtime	Runtime		
100%	3.3	2700	3000	19	36	56	76				
80%	4.5	2160	2400	25	47	71	98				
70%	6.2	1890	2100	29	55	84	113				
60%	7.4	1620	1800	36	66	87	136				
50%	9.5	1350	1500	42	78	115	155				
40%	13.7	1080	1200	49	101	147	206				
20%	29.0	540	600	102	188	252	363				

UPS Part number: GXE3-3000IRT2UXL
See notes below about runtime. Runtimes in minutes.

EBC Part number: GXE3-EBC72VRT2U

Note: Approximate runtimes at 25°C for batteries in new conditions, fully recharged and pure resistive load. Actual runtimes can vary due to battery age, temperature or configuration. Liebert GXE Tower models do not allow connection of External Battery Cabinets.

Comprehensive Service Support for Critical Systems

Note	Part Number	Description 1	Description 2	Description 3
Need to order both part numbers at the same time to get all scope for Power Emergency package (8x5). Please see SOW below.	88026969	GXE UPS 1-3kVA	Start-up/Installation	GXE UPS 1-3kVA
	88026977		Power Emergency Business Hour Contract (2 Years)	
Need to order both part numbers at the same time to get all scope for Power Emergency package (24x7). Please see SOW below.	88026977	GXE UPS 1-3kVA	Start-up/Installation	GXE UPS 1-3kVA
	88028372		Power Emergency After Hour Contract (2 Years)	

Power Emergency Package (8X5)

The Power Emergency Package provides on-site emergency support with 100% parts and labor coverage and is available for single-phase UPS products up to 3kVA. Adding Vertiv services to your Liebert GXE UPS ensures you are protected during an emergency. Includes:

- Two-year service coverage
- Guaranteed 2-4hours on-site emergency response, 5 days/ week, 8 hours/day, within 100 kms of a Vertiv's Service City.
- Includes 24x7 professional Helpline
- Advanced replacement of the faulty unit
- Shipping costs are covered by Vertiv
- Coverage for both electronic parts and battery failures
- Start-up / Installation services:
 - Start-up Services provide on-site technical support for installation and start-up of your UPS for you get up and running as quickly as possible during business hours.
 - Installation includes mounting the new UPS and powering it up
 - Configuring the IS-Webcard and make sure that it is online in their network (optional item)
 - Services performed by a Vertiv factory trained technician

Power Emergency Package (24X7)

The Power Emergency Package provides on-site emergency support with 100% parts and labor coverage and is available for single-phase UPS products up to 3kVA. Adding Vertiv services to your Liebert GXE UPS ensures you are protected during an emergency. Includes:

- Two-year service coverage
- Guaranteed 2-4hours on-site emergency response, 7 days/ week, 24 hours/day, within 100 kms of a Vertiv's Service City.
- Includes 24x7 professional Helpline
- Advanced replacement of the faulty unit
- Shipping costs are covered by Vertiv
- Coverage for both electronic parts and battery failures
- Start-up / Installation services:
 - Start-up Services provide on-site technical support for installation and start-up of your UPS for you get up and running as quickly as possible 24x7.
 - Installation includes mounting the new UPS and powering it up
 - Configuring the IS-Webcard and make sure that it is online in their network (optional item)
 - Services performed by a Vertiv factory trained technician

Build Your Total Infrastructure Solution with Vertiv

Discover expert designed IT infrastructure solutions with proven success in diverse environments and countless applications.

Vertiv™ VE Rack

Self-contained 42U server rack designed to simplify equipment installation and provides an additional 6cm of useable depth.

Vertiv™ Geist™ rPDU

Reliable power distribution with outlet level remote monitoring and management providing the highest level of power visibility and control.

Cable and Air Flow Management

Included accessories ensure proper cable management and airflow to keep your equipment cool.

Vertiv™ Liebert® GXE

Helps to protect mission critical equipment in the event of power loss or extreme power fluctuations.

Software and IT Management

Monitor the entire system either locally or remotely to ensure you are alerted of out-of-range conditions that could result in costly downtime.

