

IPX8 gel insulated minibox with connectors. Protected and secure connections in 3 simple steps.

3 sizes of gel insulated miniboxes

3 models of Spring Box® lever insulated connectors

6 solutions for insulating and protecting your connections

Shell Box® is the quickest and easiest solution to create, insulate, and protect electrical connections in a wide range of civil and industrial applications. Thanks to the combination of three sizes of snap-shut gel insulated minibox, and three models of 2, 3, and 5-way lever connector, low voltage connections can be made using up to five conductors on a single pole, up to three conductors on two poles, and two conductors on three poles.



Watch the video



Protection from water and weathering

The **silicone gel** inside the minibox insulates and protects the connections from water, moisture, and weathering, and ensures an **IPX8 protection degree** (certified by independent laboratory Intertek).



The snap-shut closure and the design of the minibox prevent accidental gel leakage, except on the cable inlet side, where it ensures that the connection is properly sealed.

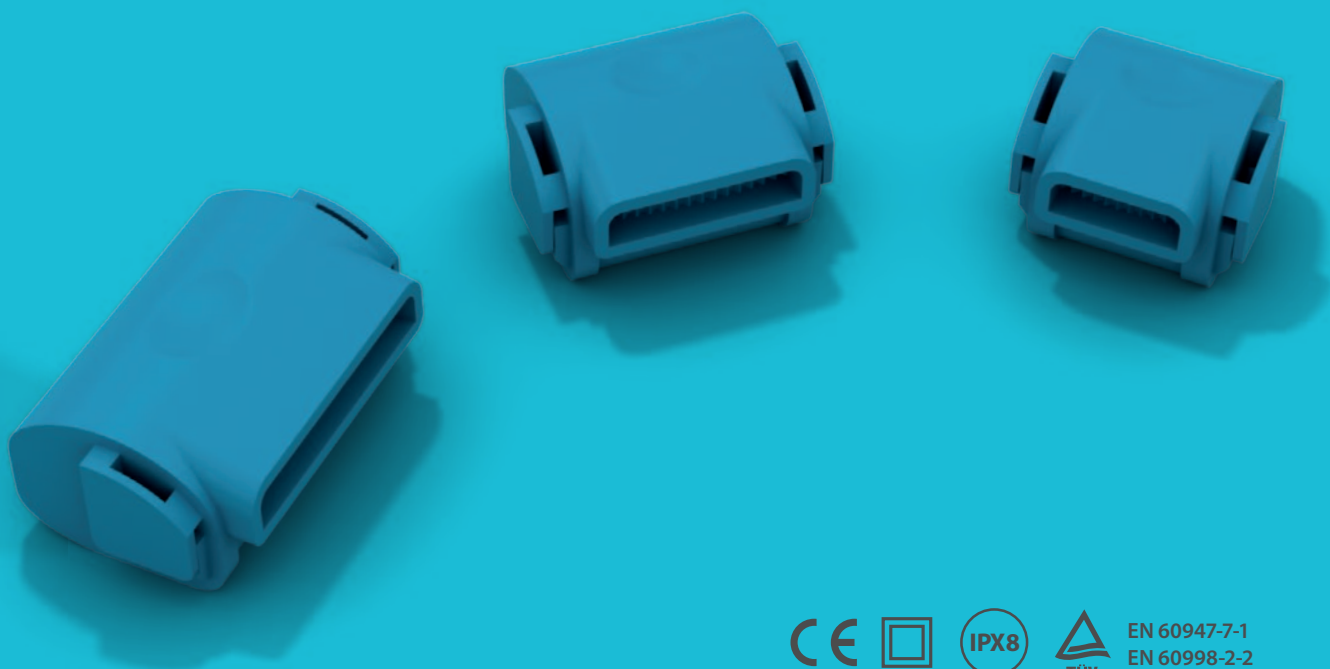
Re-enterable

With its soft-drying gel and Spring Box® technology, it is possible to re-enter the connection at any time to check the voltage thanks to the integrated test-point, or to work individually on any of the conductors.

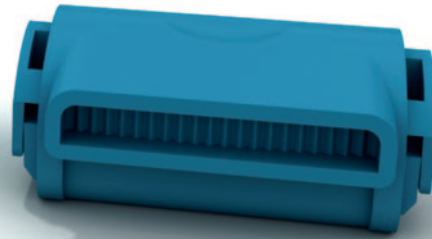
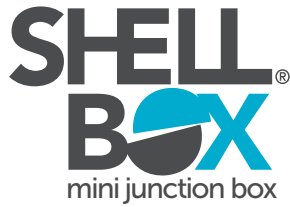


Eco-friendly

The gel inside the minibox is non-toxic, and is classified as non-hazardous under European Regulation no. 1272/2008 (CLP).



EN 60947-7-1
EN 60998-2-2



IPX8 gel insulated minibox with Spring Box[®] connectors

Shell Box[®] is an innovative series of gel insulated connecting devices with IPX8 protection degree, complete with Spring Box[®] lever connectors, to quickly and safely make, insulate, and protect electrical connections in any number of home and industrial applications with no need for tools.

Thanks to its silicone gel insulation, **Shell Box[®]** protects narrow cable (0.2 - 4 mm²) connections from water, moisture, and dust both indoors and outdoors and can be used for lighting fixtures, pumps, automation for windows, doors, and gates, telephone and telecommunications systems, sound systems, and cable radio.

Three sizes and six versions allow low-voltage connection of up to five conductors on a single phase, up to three conductors on two phases, and two conductors on three phases.



Spring Box[®] included

Shell Box[®] kits retain the innovative features and benefits of Spring Box[®] insulated connectors with lever clamps:

- Can be used with a wide range of rigid and flexible cable cross-sections: 0.2 - 4 mm²
- Rated voltage 600 V
- Rated current 32 A
- No risk of damage to even small cross-section wires
- Compliant with Low Voltage Directive 2014/35/EU according to EN 60947-7-1 and EN 60998-2-2 standards with TÜV-Rheinland certificate

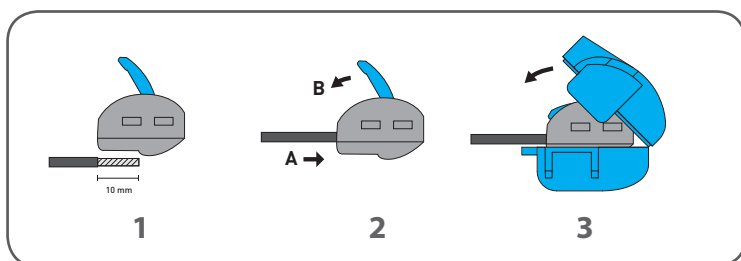
Advantages

- Compact size
- Quick and easy installation without tools
- Re-enterable
- Work on each conductor individually
- Double insulation
- No accidental gel leakage
- Versatility of use
- Reliable connections thanks to spring-loaded technology
- Use with both rigid and flexible narrow cross-section cables
- No risk of damaging wires
- Good mechanical resistance
- Eco-friendly, non-toxic with no expiry date

Applications

- Insulation and protection, even in contact with water, of low voltage electrical connections using narrow cross-section cables (lighting fixtures, automation for windows, doors and gates, telephone and telecommunications systems, sound systems, and cable radio)
- Wiring junction boxes for ceilings or outdoors
- Insulation and additional protection for junction box connections
- Terminal insulation for live cables
- Connection capacity: up to five conductors on a single pole, up to three conductors on two poles, and two conductors on three poles.

Connessioni protette e sicure in 3 semplici passi



- 1 Strip the cables exposing 10 mm of wire.
- 2 Insert the cable into one of the openings of the Spring Box® connectors and lower the clamping lever with simple finger pressure. Repeat for all the cables to be connected.
- 3 Place the connector/s in the gel insulated Shell Box® and snap it shut. The gel will leak out from the cable entry openings and will seal the connector and the connection against water, moisture, and dust.

The shell + connector system is immediately ready for use.



Shell Box 222
Connecting two-core cables



Shell Box 332
Connecting three-core cables



- **IPX8 protection degree (in accordance with CEI EN60529) certified by Intertek** (no. 200018187UDI-NSR)
- **Spring Box® connectors** comply with the Low Voltage Directive 2014/35/EU in accordance with EN 60947-7-1 and EN 60998-2-2 standards TÜV-Rheinland certificate (no. R 50349910)
- Rated voltage: 600 V
- Rated current: 32 A
- Conductor cross-section (rigid and flexible): 0.2 - 4 mm²
- The gel inside the shells is classified as non-hazardous according to European Regulation no. 1272/2008 (CLP)



Applications

- Insulation and protection, even in contact with water, of low voltage electrical connections for narrow cross-section cables (lighting fixtures, automation for windows, doors and gates, telephone and telecommunications systems, audio systems, and cable radio)
- Junction boxes for ceilings or outdoors
- Insulation and additional protection for connections in junction boxes
- Terminal insulation for live cables

Advantages

- Compact size
- Quick and easy installation without tools
- Re-enterable
- Work on each conductor individually
- Double insulation
- No accidental gel leakage
- Versatility of use
- Reliable connections thanks to spring-loaded technology
- For use with both rigid and flexible narrow cross-section cables
- No risk of damaging wires
- Good mechanical resistance
- Eco-friendly, non-toxic with no expiry date

Features

- Pre-filled shell with silicone gel and snap-shut closure
- Compact Spring Box® lever connectors included (p. 116)

Selection table

item	shell size	number of poles	no. wires/pole
Shell Box 112	size 1	1	2
Shell Box 113	size 1	1	3
Shell Box 222	size 2	2	2
Shell Box 215	size 2	1	5
Shell Box 332	size 3	3	2
Shell Box 323	size 3	2	3

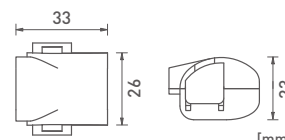


Shell Box 112



code MJB112

Gel insulated minibox with 1 Spring Box 2 connector



Connection and protection
1 pole - 2 conductors

Connection capacity

no. poles	no. wires/pole	sect. (mm ²)
1	2	0.2 - 4

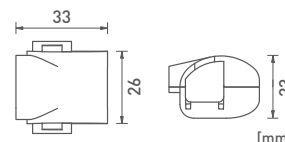


Shell Box 113



code MJB113

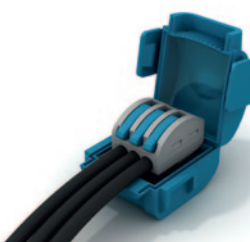
Gel insulated minibox with 1 Spring Box 3 connector

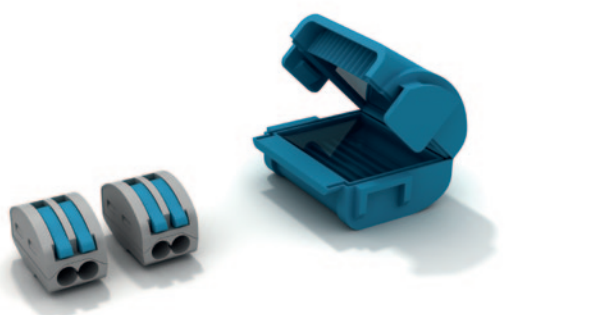


Connection and protection
1 pole - 3 conductors

Connection capacity

no. poles	no. wires/pole	sect. (mm ²)
1	3	0.2 - 4



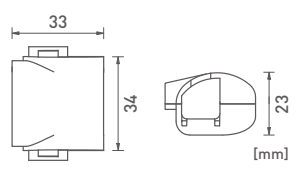


Shell Box 222

SIZE 2 IPX8

code MJB222

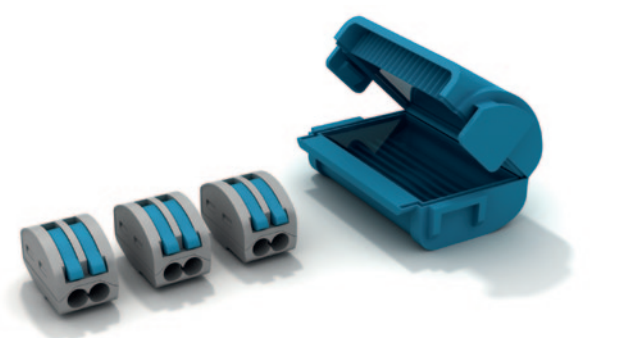
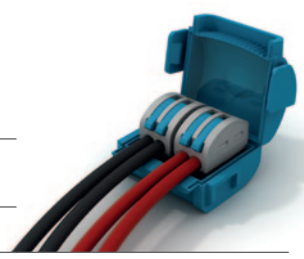
Gel insulated minibox with 2 Spring Box 2 connectors



Connection and protection
2 poles - 2 conductors

Connection capacity

no. poles	no. wires/ pole	sect. (mm ²)
2	2	0.2 - 4

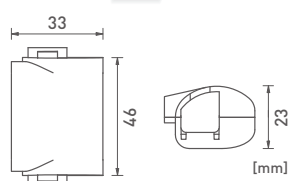


Shell Box 332

SIZE 3 IPX8

code MJB332

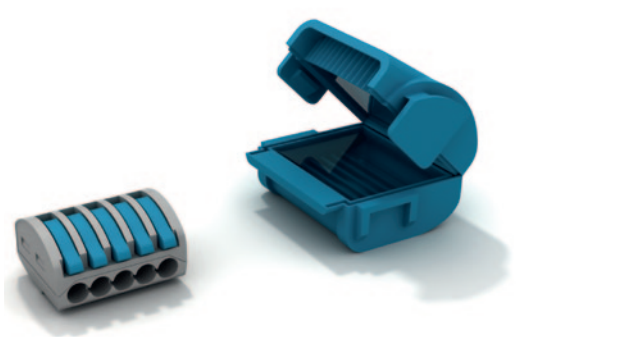
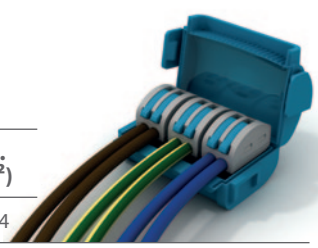
Gel insulated minibox with 3 Spring Box 2 connectors



Connection and protection
3 poles - 2 conductors

Connection capacity

no. poles	no. wires/ pole	sect. (mm ²)
3	2	0.2 - 4

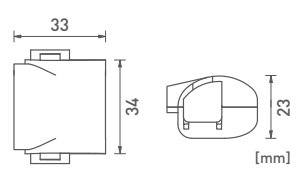


Shell Box 215

SIZE 2 IPX8

code MJB215

Gel insulated minibox with 1 Spring Box 5 connector



Connection and protection
1 pole - 5 conductors

Connection capacity

no. poles	no. wires/ pole	sect. (mm ²)
1	5	0.2 - 4

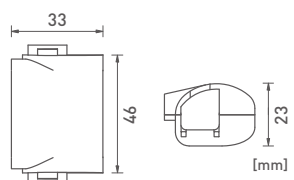


Shell Box 323

SIZE 3 IPX8

code MJB323

Gel insulated minibox with 2 Spring Box 3 connectors



Connection and protection
3 poles - 2 conductors

Connection capacity

no. poles	no. wires/ pole	sect. (mm ²)
2	3	0.2 - 4

