



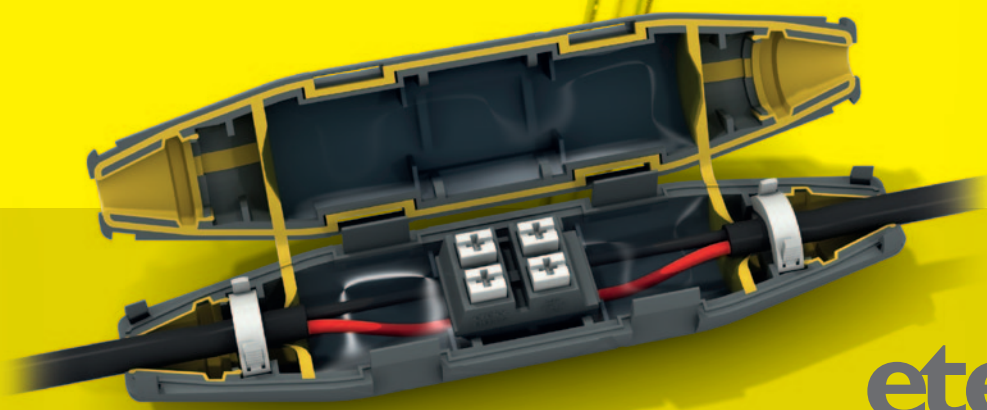
LEDJOY[®]

SMART CONNECTION



Through thick and thin.

LEDJOY[®], the tiny junction device
that loves narrow spaces.



 MADE IN ITALY

etelec[®]
electrical technology

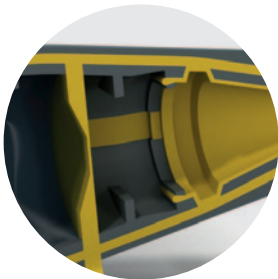


LEDJOY[®]
SMART CONNECTION

IP68 gel insulated junction device

LEDJOY[®] is an innovative **gel insulated junction device** for connecting small cross-section cables from 0.5 to 1.5 mm² **with IP68 protection degree.**

Its innovative design and patented solutions guarantee reliable performance in narrow spaces and under all conditions.



Co-moulding technology

Ledjoy shell is made up of:

- a self-extinguishing **rigid** plastic **outer shell** that guarantees the mechanical protection of the connection, also suitable for buried installation;
- co-moulded **flexible walls** for gel retention, allowing easy cable housing with no need to break or remove any rigid walls;
- **watertight gaskets**, also co-moulded with the outer shell, for complete sealing.

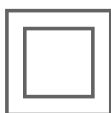


IP68: total protection

The innovative features of LEDJOY[®] shell together with silicone gel technology **guarantee IP68 protection degree** without the need for cable glands.

Total protection from water, dust, debris, and weathering under all installation conditions.

IP68



Double insulation

thanks to the insulated connectors included in the kit.



Two connectors included

2-pole insulated spring connector

makes the connection quick and easy with no need for tightening tools, and guarantees a high resistance to traction without compromising the integrity of narrow cross-section conductors.



3-pole insulated screw-type clamping connector

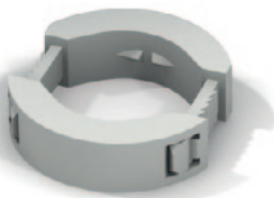
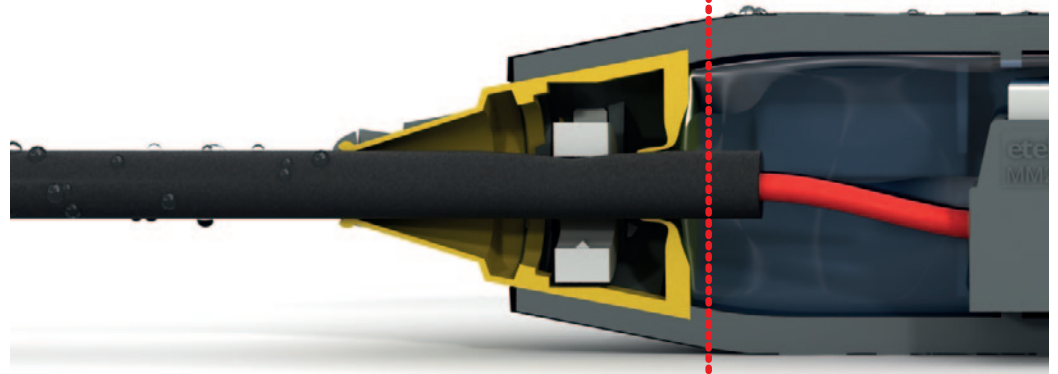
with protection blades for narrow cross-section conductors.



Zero capillarity, no condensation

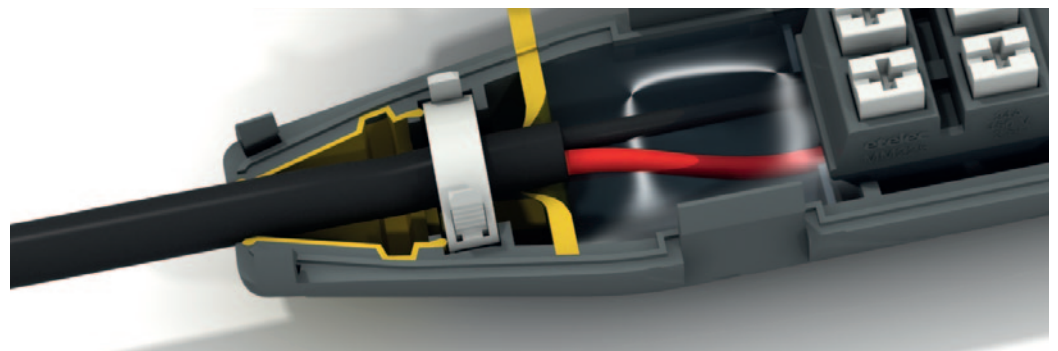
The silicone gel inside LEDJOY® guarantees high long-term protection and insulation, preventing moisture entering the shell, the rise of moisture along the cable due to capillary action, and the formation of condensation inside the appliances, a frequent cause of damage (especially LED lighting fixtures).

NO CONDENSATION IP68



Cable blocking system

specially designed and easy to apply without tools and tightening screws, heightening the safety of the connection, securing the cable in the event of traction or external mechanical stress.





Minimum size, maximum performance

With its compact circular shape and small size, LEDJOY® can also be installed in narrow spaces, and can be used in cable ducts, corrugated pipes, poles, and supporting structures, with no need for supplementary junction boxes.

LEDJOY® is easy and quick to instal even in limited operating space as it requires no tools, cable gland or components to pull over the cables.

The reduced number of components, the absence of gaskets to be assembled, and the few and easy operations to carry out allow quick and reliable installation.

Re-entereable connection

The features of LEDJOY® and gel technology allow re-entry to the connection.

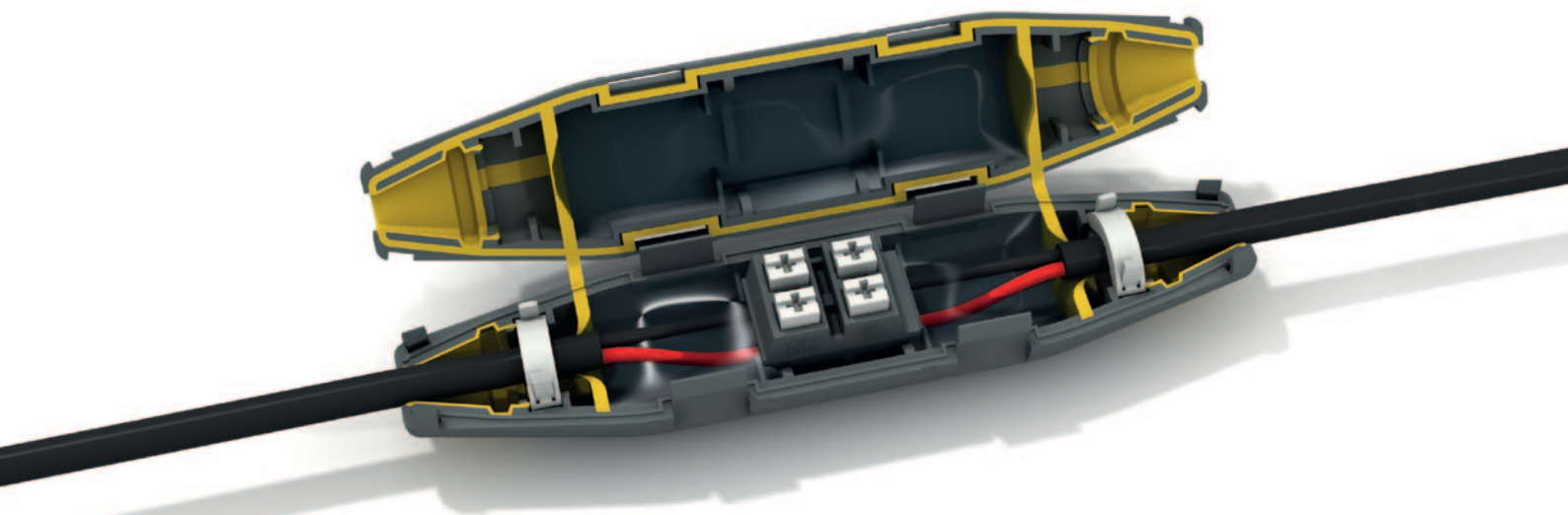
Eco-friendly

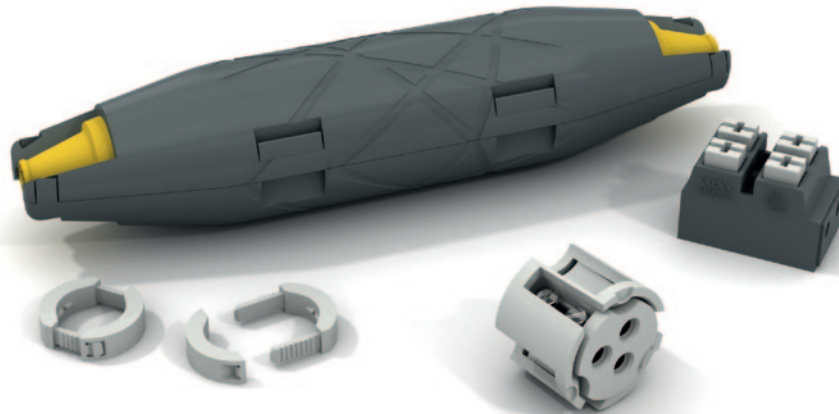
The gel inside LEDJOY® is non-toxic, and has no expiry date. Its ability to protect and insulate connections does not change with time.

It is classified as a **non-hazardous product** under European Regulation no. 1272/2008 (CLP).

Versatility of use

- Urban and civic lighting, even in contact with water (street lighting systems, road and carriageway signs, gardens, fountains, walkover ground lighting)
- Indoor residential and ambient lighting
- LED lighting systems
- Video-surveillance systems
- Industrial and civil automation (barriers, gates, machine board systems)





LEDJOY®

code LDJ01

IP68 gel insulated junction device



Kit contents

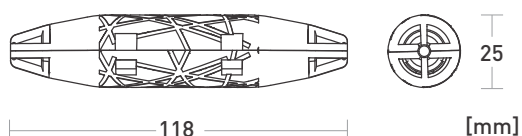
- Rigid polymeric plastic shell with snap-shut closure, co-moulded with integrated gaskets and flexible walls and pre-filled with silicone gel
- 2-pole insulated connector with spring-loaded clamps
- 3-pole insulated screw-type clamping connector with wire-protection blades
- Cable blocking system

Technical features

- IP68 Protection degree, certified in accordance with CEI EN 60529 standard
- Double insulation
- Self-extinguishing
- Compliant with Directive 2011/65/UE (RoHS 2)
- Halogen free
- Non-hazardous product under European Regulation no. 1272/2008 (CLP)

Table of use

item	number of cores	conductor cross-section (mm ²)	rated voltage (V)	rated current (A)
LEDJOY	2-3	0,5-1,5	450	24
cable diameter: 5-9 mm				



- total protection
- zero capillarity
- compact size
- small number of tools
- 2 connectors included
- quick and error-free installation
- few components to assembly
- no cable gland to be pulled over cables
- no more lost gaskets
- versatility of use



Watch
the video