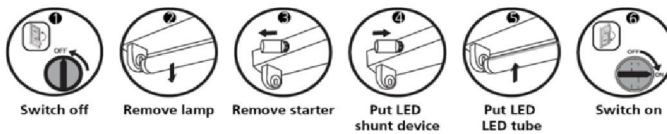


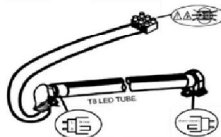


Installation Procedure for Replacement :



OR

Installation by Connect directly to L-N



### Specification Features

- 220° beam angle
- Long lifetime : more than 15,000 hrs
- Built-in LED current-control driver
- UV and IR radiation can be avoided
- Easy for installation
- Fixed Cap
- Mercury-Free
- Glass Tube

### Application

- Operating temperature : -20°C - +45°C
- Only for indoor application
- Not for use with dimmers

### SPECIFICATION

Description	Voltage	Colour Name	Color	CRI	Watt	Base	Equivalent Watt	Lumen	Beam	Life (h)	Dimmable
RefLED T8 ECO-GL 8W 3000K V3	220-240V	Warmwhite	3000K	80	8	G13	FL T8 18W	800	220	15000	No
RefLED T8 ECO-GL 8W 4000K V3	220-240V	Coolwhite	4000K	80	8	G13	FL T8 18W	800	220	15000	No
RefLED T8 ECO-GL 8W 6500K V3	220-240V	Daylight	6500K	80	8	G13	FL T8 18W	800	220	15000	No
RefLED T8 ECO-GL 9W 3000K V3	200-260V	Warmwhite	3000K	80	9	G13	FL T8 18W	1050	220	20000	No
RefLED T8 ECO-GL 9W 4000K V3	200-260V	Coolwhite	4000K	80	9	G13	FL T8 18W	1050	220	20000	No
RefLED T8 ECO-GL 9W 6500K V3	200-260V	Daylight	6500K	80	9	G13	FL T8 18W	1050	220	20000	No
RefLED T8 ECO-GL 16W 3000K V3	220-240V	Warmwhite	3000K	80	16	G13	FL T8 36W	1600	220	15000	No
RefLED T8 ECO-GL 16W 4000K V3	220-240V	Coolwhite	4000K	80	16	G13	FL T8 36W	1600	220	15000	No
RefLED T8 ECO-GL 16W 6500K V3	220-240V	Daylight	6500K	80	16	G13	FL T8 36W	1600	220	15000	No
RefLED T8 ECO-GL 18W 3000K V3	200-260V	Warmwhite	3000K	80	18	G13	FL T8 18W	2100	220	20000	No
RefLED T8 ECO-GL 18W 4000K V3	200-260V	Coolwhite	4000K	80	18	G13	FL T8 18W	2100	220	20000	No
RefLED T8 ECO-GL 18W 6500K V3	200-260V	Daylight	6500K	80	18	G13	FL T8 18W	2100	220	20000	No

### DIMENSION

### Specifications (Outline Drawing)



Model	A	B	C
8W	590mm	604mm	26mm
9W	590mm	604mm	26mm
16W	1198mm	1212mm	26mm
18W	1198mm	1212mm	26mm